

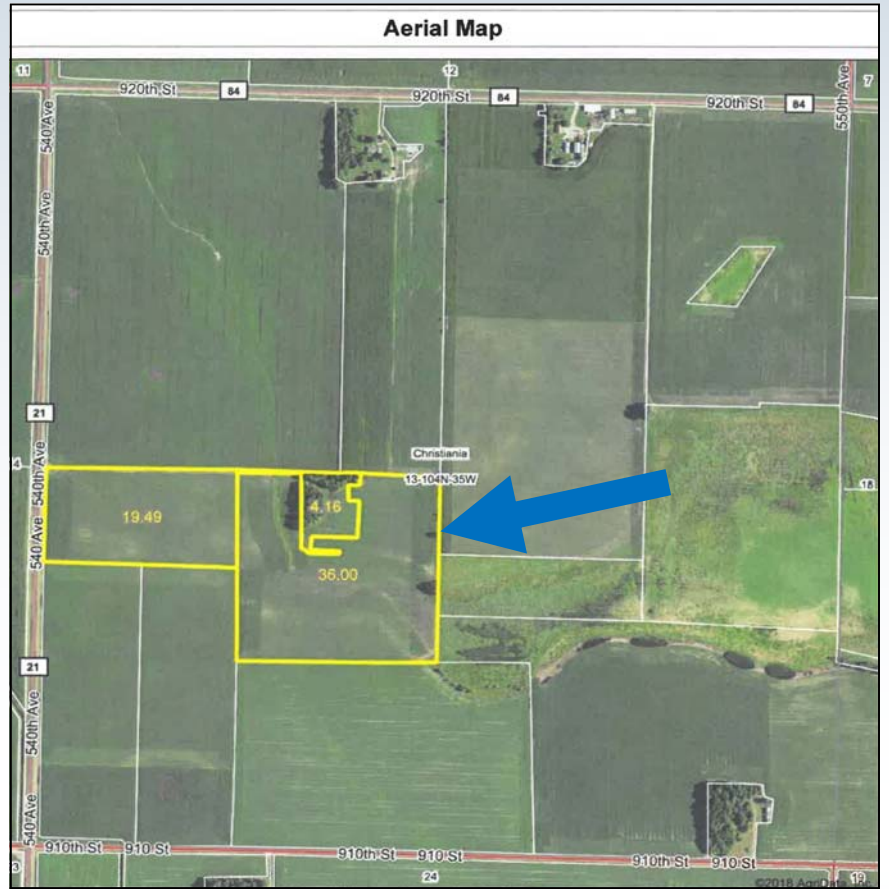
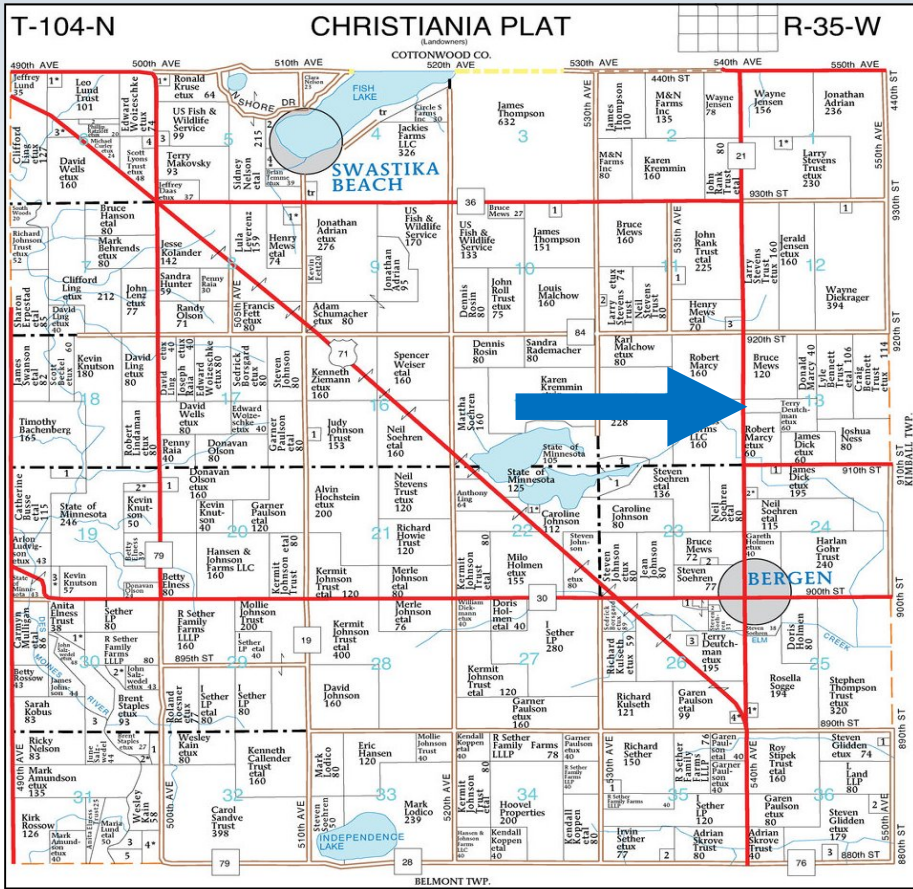


# 60 ACRES +/-

# Christiana Township Jackson County, Minnesota

# Farmland For Sale

We are very pleased to offer for sale the Deutchman Family farmland containing 60 acres +/- bare farmland in Christiana Township, Jackson County, Minnesota.



### Legal Property Description

The North Half of the Northwest Quarter of the Southwest Quarter & Northeast Quarter of the Southwest Quarter (N1/2 NW1/4 SW1/4 & NE1/4 SW1/4) 13-104N- 35W Jackson County, MN. Containing 60 acres more or less

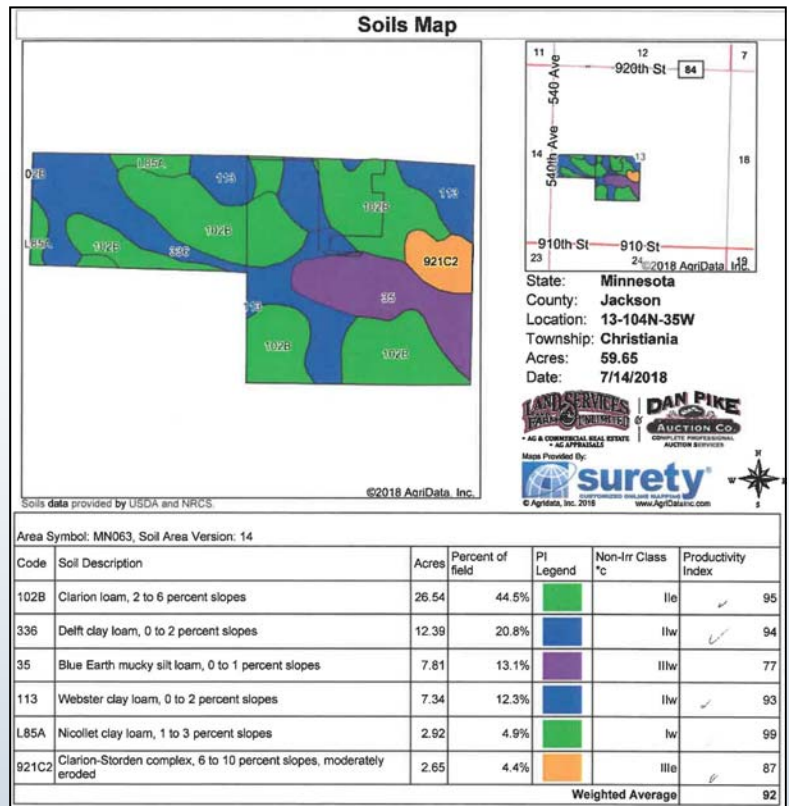
### Crop Productivity Index & Tillable Acres:

92 Crop Productivity Index

56.71 Tillable Acres more or less

### REAL ESTATE SALE TERMS

The terms of the sale of this farm is based on a cash sale, with possession after the 2018 crops have been removed. The property is being sold subject to any and all zoning, environmental, municipal, state, or federal laws or easements of record. Property is being sold "As Is" and the buyers are responsible for all inspections of the property prior to their purchase of it. All information contained in this brochure and provided by the sellers and/or their agents is subject to the inspection and verification by all bidders/buyers relying on it. No guarantee or warranty will be expressed or implied by the sellers or their agents and there is no liability assumed by the sellers or their agents for the accuracy, error or omission of any information provided. All offers & sales are subject to owner's approval. Land & Farm Services Unlimited, LLC, Dan Pike represent the sellers in this transaction.



This farm is being marketed on a Listed/Private Sale Method. If interested contact Dan Pike to make an offer. All interested parties should contact Dan Pike at Land & Farm Services Unlimited, LLC @ 507-847-3468. Call before it is gone!

## PROPERTY OFFERED EXCLUSIVELY FOR SALE BY



410 Springfield Parkway Jackson, MN.  
507-847-3468 or 888-847-3486  
www.landfarmservices.com or  
www.danpikeauction.com

### LISTING BROKER

DAN PIKE  
507-847-3468  
Land & Farm Services  
Unlimited, LLC



### Broker's Property Comments

This farm would make a good addition to any farming operation & is an excellent opportunity to purchase southern Minnesota farmland. If you are a farmer looking to add to your present operation or an investor, make sure to take a look. Make sure to call before it is gone.

FOR MORE INFORMATION REGARDING THIS FARM CHECK OUR WEB SITE

www.landfarmservices.com  
or www.danpikeauction.com