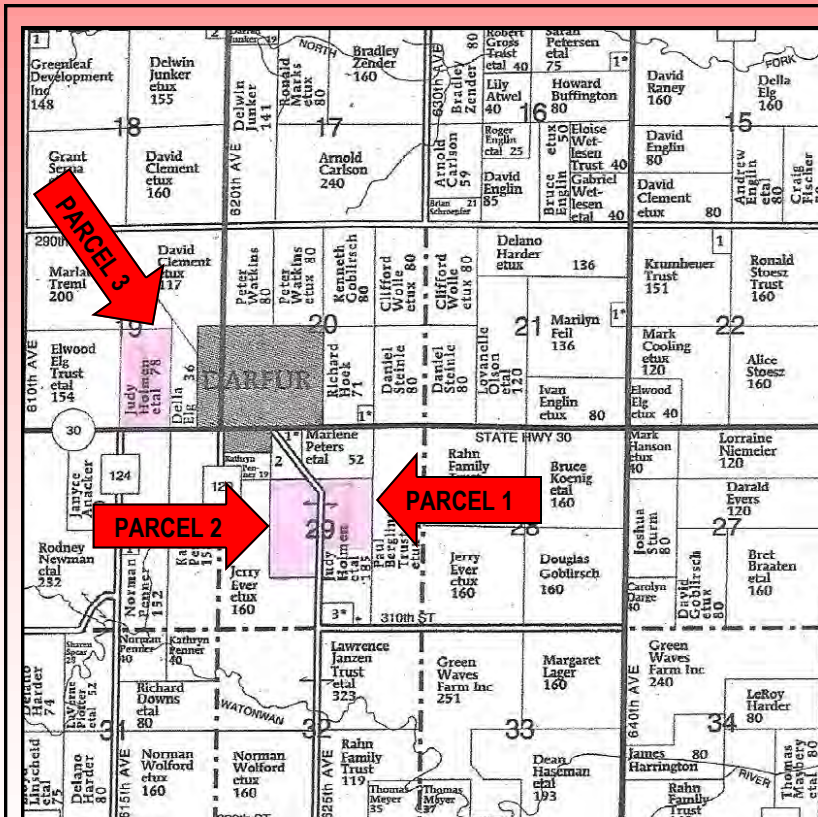


EVENING ESTATE LAND AUCTION

To settle the Holmen Estate, the following bare farmland will be sold at public auction at the Darfur Community Center in Darfur, MN on:

TUESDAY, NOVEMBER 18th, 2014 @ 7:00 P.M.



LOCATION OF FARMS—PARCEL #1 & #2—From SE corner of Darfur, just 1/2 mile south on 625th Avenue. PARCEL #3— 1/4 mile west of Darfur on Hwy 30

LEGAL & GENERAL INFORMATION—PARCEL #1: 64 Acres north of present building site located in the W 1/2 of the East 1/2 of Section 29 Adrian Twp., Watonwan County, MN T107N R33W with 62.00 acres tillable and a Productivity Index Rating of 90.3 (subject to final survey). PARCEL #2: 79 Acres located in the W 1/2 of the W 1/2 Section 29 Adrian Twp., Watonwan County, MN T107N R33W with 77 acres tillable and a Productivity Index Rating of 88.5 (subject to final survey). *NOTE—Parcels 1 & 2 are located next to each other separated by public road. PARCEL #3: 78.20 Acres located in the W 1/2 of the SE 1/4 Section 19 Adrian Twp., Watonwan County, MN T107N R33W with 77.5 tillable acres and a Productivity Index Rating of 88.6. *NOTE—All 3 parcels have roads only on one side, they lay very nice, have a good productivity index and have been farmed by top operators.

TERMS—20% down the evening of the auction made out to the sellers designated trust account. Checks will be deposited on November 19, 2014 with the balance being due either December 22, 2014 or January 5, 2015 as sellers desire. Buyer may enter immediately after sale date to prepare for 2015 crop as soon as 2014 crop is removed. If any land prepared for 2015 crop ahead of sale date, standard custom rates would

apply (to be paid by buyer). Seller retains crop rental for crop year 2014. Seller will pay real estate taxes and assessments of record the evening of auction due in 2014. Buyer will pay real estate taxes due in 2015 and thereafter. This sale is NOT CONTINGENT ON BUYER FINANCING and 20% down payment is non-refundable. Any appraisal or loan fees are buyer's obligation. It is interested bidder's obligation to inspect property prior to bidding. The farm will be offered as 3 parcels on our split parcel board system. Those wishing to bid by cell phone must make arrangements with members of auction staff prior to 12:00 P.M. on auction day. Final sale of property subject to family approval. There is no buyer's premium on this auction.

INSPECTION—Wednesday, November 11th from 9:00 A.M. to Noon at both locations or by appointment with Dar Hall Auction Service 507-327-0535 or Allen Kahler 507-764-3591. Pre-sale booklets also available at the Triumph State Bank in Darfur or visit our website at www.landservicesunlimited.com. After crop removed, interested parties have permission to drive or walk farm. Pre-auction booklets will contain all available governmental information and available tile information. Both sellers & auction staff consider the information to be correct, but make no guarantees to their accuracy.

AUCTIONEERS NOTE—It is a great honor to work for the Children of Edner & Fern. They have chosen the auction method to be fair to all friends and neighbors. These parcels have been in the Holmen ownership for many years.

SELLERS OR AUCTION STAFF NOT RESPONSIBLE FOR ACCIDENTS!

EDNER & FERN HOLMEN ESTATE

JAMES HOLMEN, MARY KRECH & JUDY HOLMEN-OWNERS

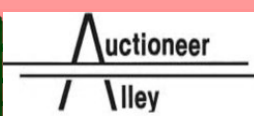
AUCTIONEERS AND SALES STAFF

DARWIN HALL 507-327-0535

ALLEN KAHLER, CAI-MN-IA Broker #RA-41579
& B57538000 Phone # 507-764-3591

KEVIN & RYAN KAHLER

DOUG WEDEL, DUSTYN HARTUNG & DAN PIKE



923 N STATE ST. FAIRMONT, MN—507-238-4318

Hall Auction Service

DARWIN HALL, LICENSE #83-24

CELL #507-327-0535 OFFICE #507-956-2083

39154 630TH AVENUE, BUTTERFIELD, MN



www.landservicesunlimited.com