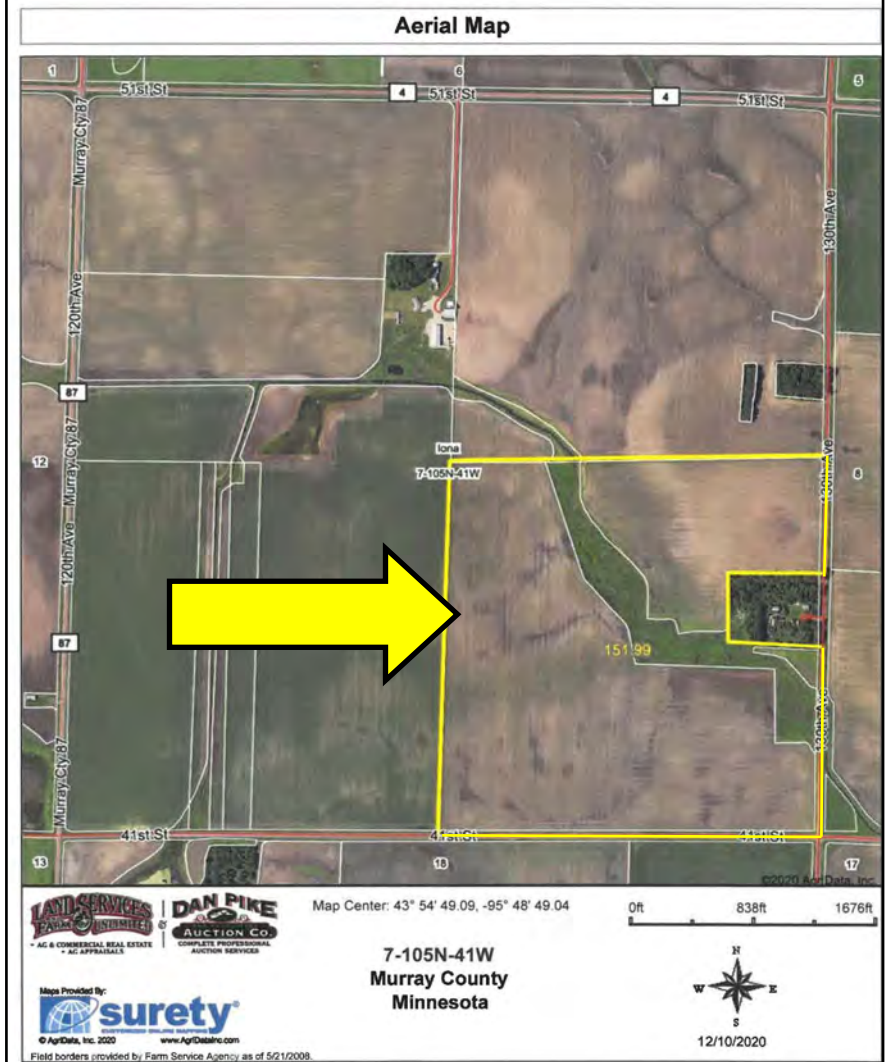
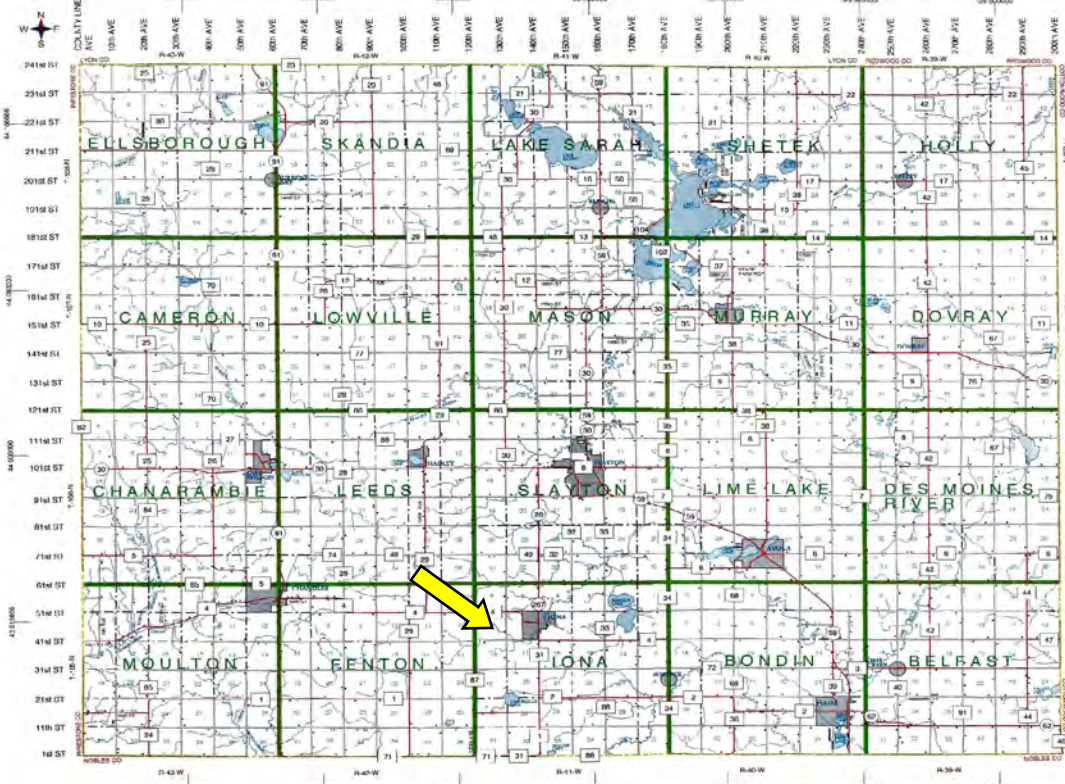


**JUST LISTED - 151.99 Acres +/-
IONA TOWNSHIP, MURRAY COUNTY, MN.**

FARMLAND FOR SALE

Murray County, Minnesota



PROPERTY LOCATION

From the junction of County Road #31 & #4 in Iona, Minnesota,
1 mile west on #4 to 130th Avenue, then 1/2 mile south.
Watch for signs.

PROPERTY LEGAL DESCRIPTION

Southeast Quarter (SE1/4) excepting 8.01 acres in the
Northeast Quarter of the Southeast Quarter
(NE1/4 SE1/4) in Murray County, MN.
Murray County Parcel #'s 10.007.0040 & 10.007.0030.
Containing 151.99 acres more or less.

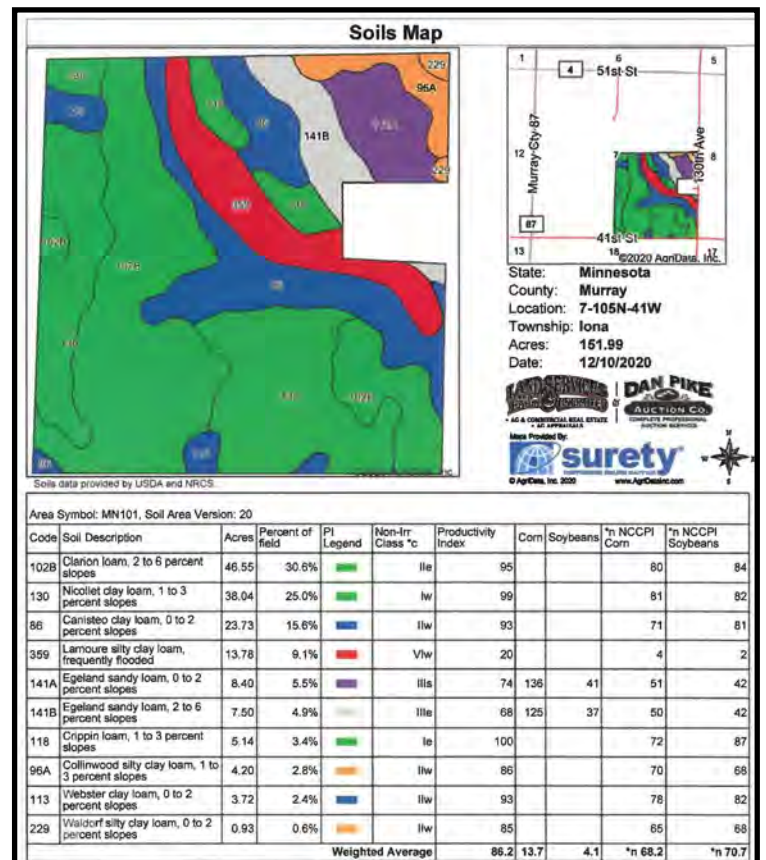
FSA INFORMATION

Deeded Acres: 151.99+/- **Farmland Acres: 145.19+/-**
DCP Cropland Acres: 129.64 +/-

Corn Base: 72.64 Acres+/- **CORN PLC Yield: 176 bushels**

Soybean Base: 52.29 Acres+/- **SOYBEAN PLC Yield: 46 Bushels**

Crop Productivity Index Rating: 86 (Estimated based on Surety Agra Data)



OWNERS:

**Gail & Thomas Thompson - Sharon Geiken
And
Brech Family Foundation - Janice & Dennis Brech - Trustees**

Priced to sell! Call today to make an your offer. Possession for the 2021 crop year

To make an offer or for more information go to www.danpikeauction.com or call 507-847-3468.

OFFERED BY

Daniel J. Pike

Land Broker - Auctioneer - Appraiser

Scott Christopher

Real Estate Sales Person - Auctioneer - Appraiser

410 Springfield Parkway Jackson, MN 56143 Phone 507-847-3468 (Office)

www.danpikeauction.com



• AG & COMMERCIAL REAL ESTATE
• AG APPRAISALS



COMPLETE PROFESSIONAL
AUCTION SERVICES